

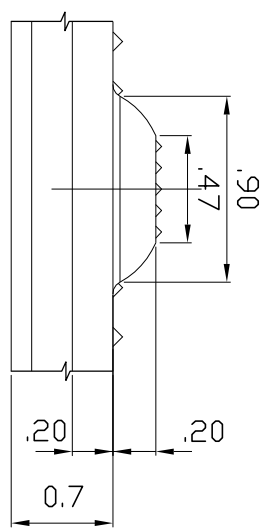
● Advantage Tactile Systems
 ADVANTAGE ADVANTAGE TACTILE SYSTEMS, ADVANTAGE
 HYBRID TACTILE SYSTEMS AND THE TWO AND THREE
 DIMENSIONAL DESIGNS ON THE TILE BETWEEN AND ON THE
 DIMES ARE TRADEMARKS OF ADVANTAGE TACTILE SYSTEMS
 INC.
 PATENTS MAY APPLY
 U.S. PATENT NO. 5,775,585; 6,449,790; 6,895,622; 7,000,279
 and 7,690,862.
 US PATENTS PENDING 12/214,452; 12/721,279; 14/349,549;
 14/376,586; AND 62/086,707.
 CAN. PATENTS PENDING CA 6558211
 CA 2755566; CA 2820541 and CA 2854358
 MANUFACTURED AND DISTRIBUTED BY
 ADVANTAGE TACTILE SYSTEMS INC.
 KENNETH E. SZEKELY

MATERIAL LIST

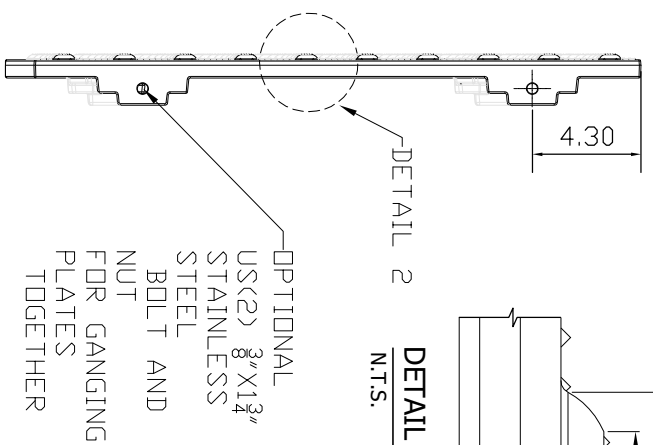
ITEM	DESCRIPTION	PART NO.	QTY
1	CAST IRON TWSI PLATE	ADV-CI-2417SR	1
2			
3			
4			
5			

REFERENCE DRAWINGS

DWG. NO.	DESCRIPTION

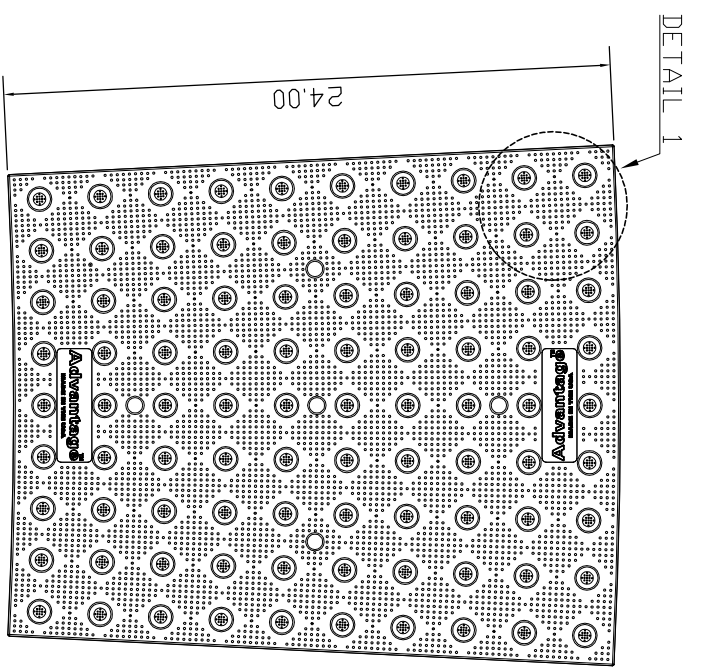


DETAIL 2 (TYPICAL DOME SECTION)
N.T.S.

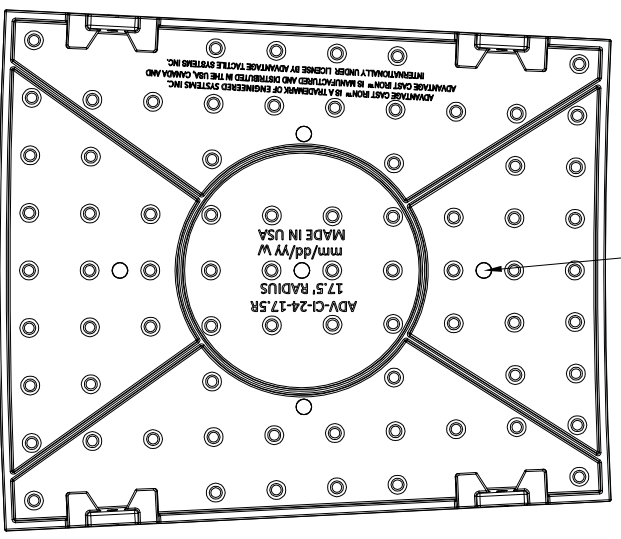


ELEVATION VIEW 1
N.T.S.

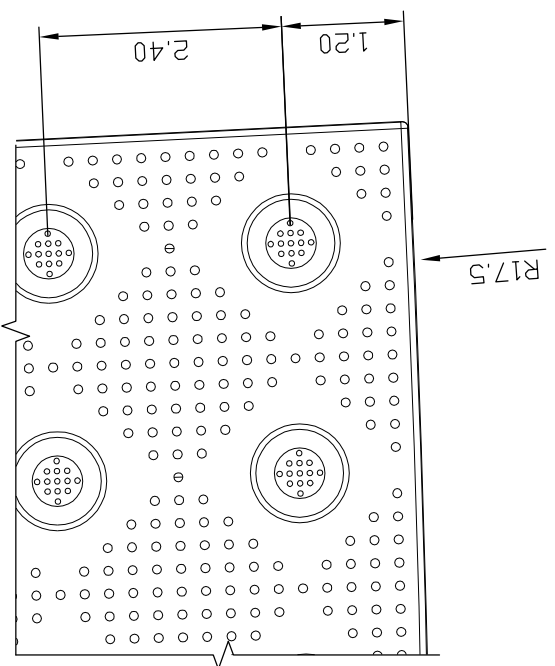
OPTIONAL
 US(2) 3/8" X 1 3/4"
 STAINLESS
 STEEL
 BOLT AND
 NUT
 FOR GANGING
 PLATES
 TOGETHER



TOP PLAN VIEW
SCALE 1-1/2"
VENTI HOLE
(TYPE, 5 LOCATIONS)



BOTTOM PLAN VIEW
SCALE 1-1/2"



DETAIL 1
SCALE 6" = 1'-0"

PROJECT	ADVANTAGE CAST IRON DETECTABLE/TACTILE WARNING SURFACE INDICATOR PLATE 2417SR
DATE	09/15
BY	D.S.
CHECKED BY	DD
PROJECT NUMBER	
TITLE	TWSI
PART NO.	ADV-CI-2417SR
WITNESSED BY	GRAY CAST IRON/ASTM A48 CLASS 35B
SUBJECT	



REV. NO.	0
DATE	0
BY	0
DESCRIPTION	ADV-CI-USA TILES