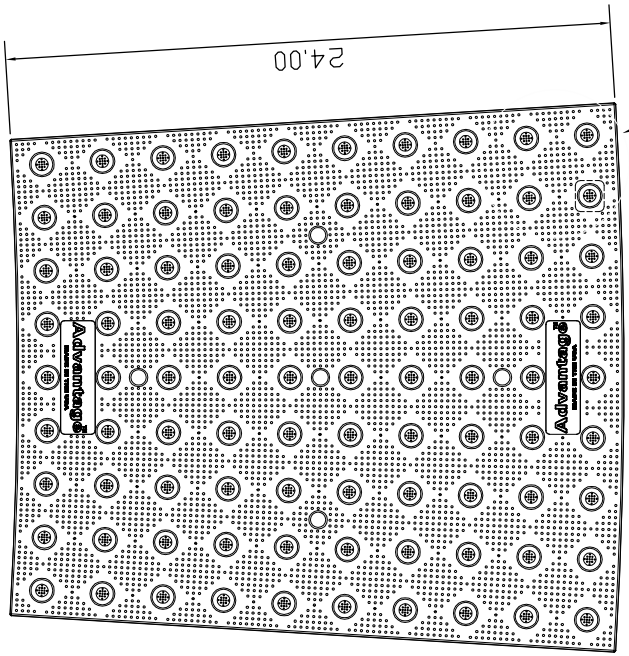
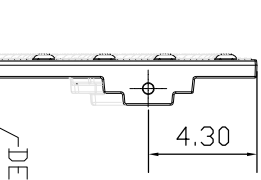
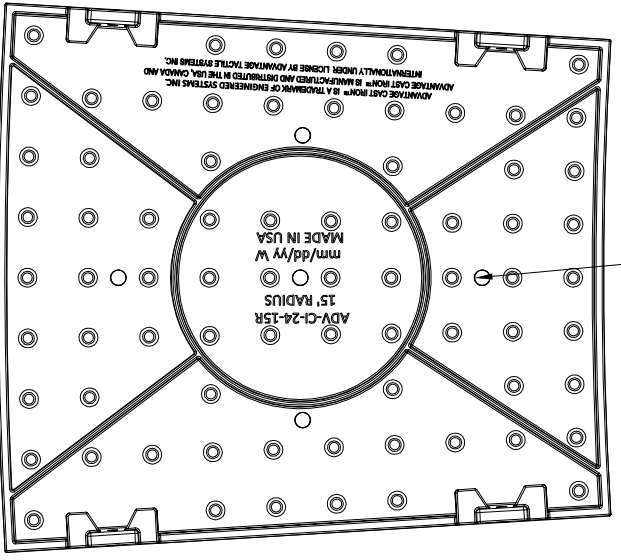


DETAIL 1

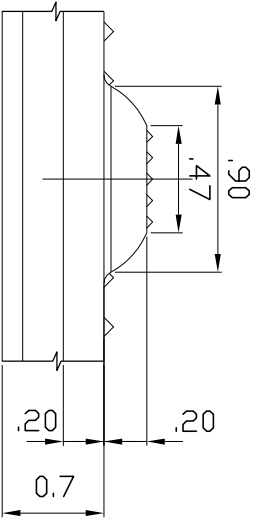


VENT HOLE
(TYPE, 5 LOCATIONS)
TOP PLAN VIEW
SCALE 1-1/2"

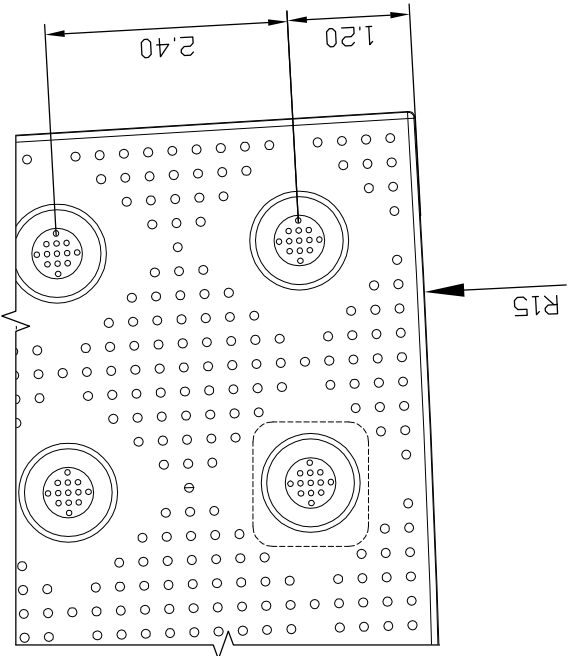


DETAIL 2
N.T.S.
OPTIONAL
US(2) 3/8" X 1/4"
STAINLESS
STEEL
BOLT AND
NUT
FOR GANGING
PLATES
TOGETHER

ELEVATION VIEW 1
N.T.S.



DETAIL 2 (TYPICAL DOME SECTION)
N.T.S.



BOTTOM PLAN VIEW
SCALE 1-1/2"

DETAIL 1
SCALE 6" = 1'-0"



Advantage Tactile Systems
ADVANTAGE TACTILE SYSTEMS, ADVANTAGE
HYBRID TACTILE SYSTEMS AND THE TWO AND THREE
DIMENSIONAL DESIGNS ON THE TILE BETWEEN AND ON THE
DIMES ARE TRADEMARKS OF ADVANTAGE TACTILE SYSTEMS
INC.
PATENTS MAY APPLY
U.S. PATENT NO. 5,775,585; 6,449,790; 6,895,622; 7,000,279
and 7,690,862.
US PATENTS PENDING 12/214,452; 12/721,279; 14/349,549;
14/376,586; AND 62/086,707.
CAN. PATENTS PENDING CA 6558211;
CA 2755566; CA 2820594 and CA 2854358
MANUFACTURED AND DISTRIBUTED BY
ADVANTAGE TACTILE SYSTEMS INC.
KENNETH E. SZEKELY

MATERIAL LIST		
ITEM	DESCRIPTION	PART NO. QTY
1	CAST IRON TWSI PLATE	ADV-CI-2415R 1
2		
3		
4		
5		

REFERENCE DRAWINGS

DWG. NO.	DESCRIPTION

No.	DATE	REVISION	APP.

SCALE		
AS NOTED		
DESIGNED BY	K.S.	DATE 09/15
DRAWN BY	D.S.	DATE 09/15
CHECKED BY	DD	DATE 09/15

TITLE	PART NO.
TWSI	ADV-CI-2415R
WATERGAL	
SUBJECT	GRAY CAST IRON/ASTM A48 CLASS 35B



PROJECT
ADVANTAGE CAST IRON
DETECTABLE/TACTILE WARNING
SURFACE INDICATOR PLATE
2415R

DRAWING NO.	SHT. NO.	REV. NO.
ADV-CI-USA TILES	0	0