



© Advantage Facilitate Systems  
 ADVANTAGE FACILE SYSTEMS, ADVANTAGE HYBRID FACILE SYSTEMS AND THE TWO AND THREE DIMENSIONAL DESIGNS ON THE TILE BETWEEN AND ON THE DIMES ARE TRADEMARKS OF ADVANTAGE FACILE SYSTEMS INC.  
 PATENTS MAY APPLY  
 U.S. PATENT NO. 5,775,385; 6,449,790; 6,895,622; 7,000,279 and 7,690,082.  
 U.S. PATENTS PENDING: 12/274,452; 12/721,279; 14/349,549; 14/376,586; AND 62/086,707.  
 CAN. PATENTS PENDING: CA 6558211.  
 CA. PATENTS 2755566; CA 2800541 and CA 2854358  
 MANUFACTURED AND DISTRIBUTED BY  
 ADVANTAGE FACILE SYSTEMS INC.  
 KENNETH E. SZEKELY

**MATERIAL LIST**

ITEM	DESCRIPTION	PART NO.	QTY
1	CAST IRON TWSI PLATE	ADV-CI-2425R	1
2			
3			
4			
5			

**REFERENCE DRAWINGS**

DWG. NO.	DESCRIPTION

No.	DATE	REVISION	APP.

SCALE: AS NOTED

DESIGNED BY	K.S.	DATE	09/15
DRAWN BY	D.S.	DATE	09/15
CHECKED BY	DD	DATE	09/15

PROJECT NUMBER: \_\_\_\_\_

TITLE: TWSI

PART NO.: ADV-CI-2425R

WITNESSED BY: \_\_\_\_\_

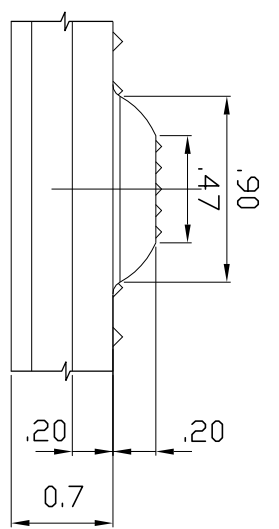
MATERIAL: GRAY CAST IRON/ASTM A48 CLASS 35B

SUBJECT: \_\_\_\_\_

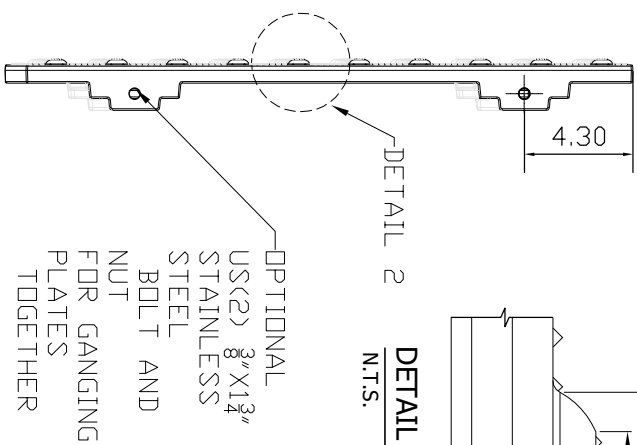


PROJECT: ADVANTAGE CAST IRON  
 DETECTABLE/TACTILE WARNING  
 SURFACE INDICATOR PLATE  
 2425R

DRAWING NO.	REV. NO.
ADV-CI-USA TILES	0

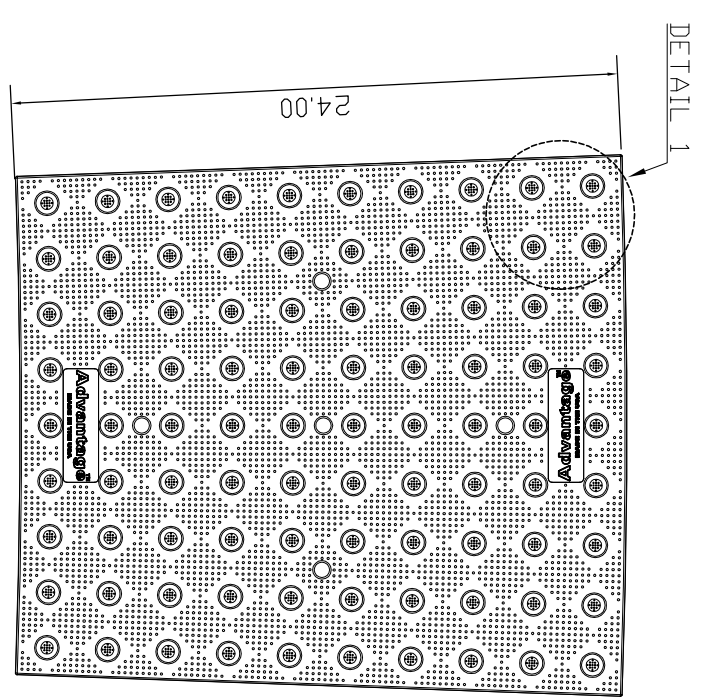


**DETAIL 2 (TYPICAL DOME SECTION)**  
N.T.S.

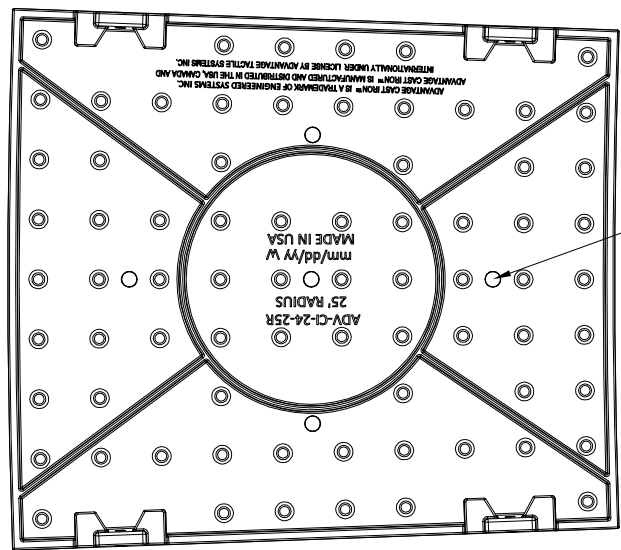


**ELEVATION VIEW 1**  
N.T.S.

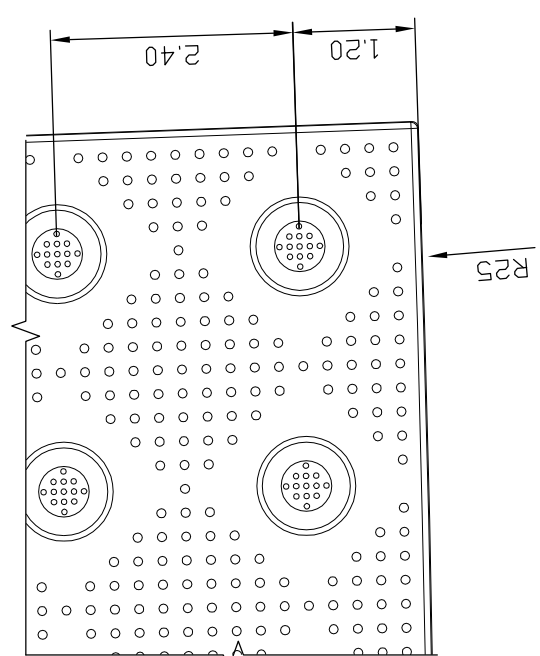
OPTIONAL  
 US(2) 8 X 13"  
 STAINLESS  
 STEEL  
 BOLT AND  
 NUT  
 FOR GANGING  
 PLATES  
 TOGETHER



**VENT HOLE TOP PLAN VIEW**  
SCALE 1-1/2"  
<TYPE: 5 LOCATIONS>



**BOTTOM PLAN VIEW**  
SCALE 1-1/2"



**DETAIL 1**  
SCALE 6" = 1'-0"